

Subdivision No.

63

DINSMORE'S ORCHARD

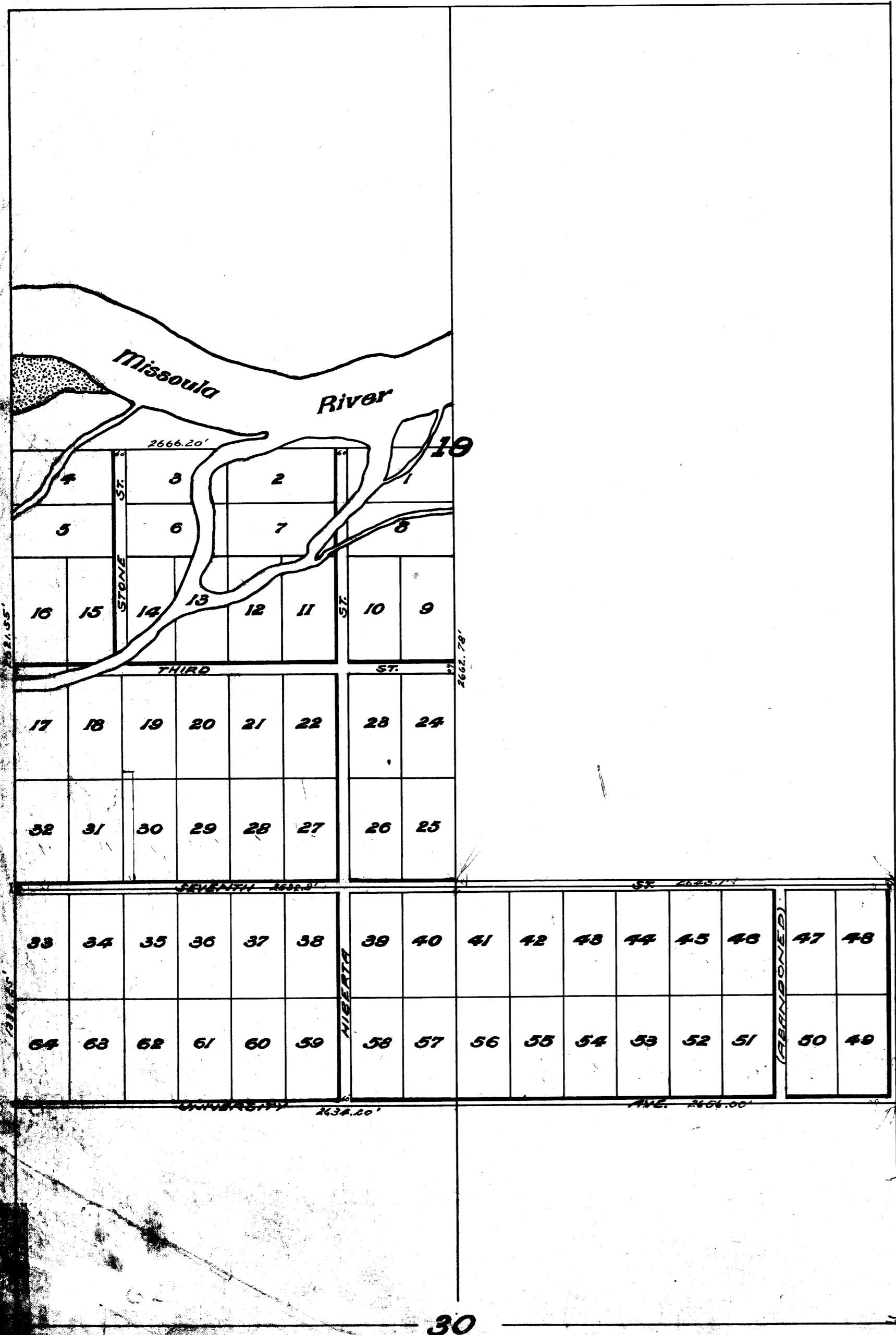
HOMES.

ADD. NO. 4.

AT MISSOULA, MONT.

- IN 5 ACRE TRACTS -

600 FT TO 1 IN.



STATE OF MONTANA } SS
COUNTY OF MISSOULA }

I, Samuel Dinsmore, do hereby certify that I have caused to be surveyed, subdivided, and platted into lots and streets, as shown by the plan and certificate of survey herunto annexed, the following described tract of land to wit: - The South-west quarter of Section Nineteen (19) and the North half (1/2) of the Northwest quarter (1/4), and the North half (1/2) of the Northeast quarter (1/4), of Section Thirty (30), Township Thirteen, North, Range Nineteen (19) West of the principal Meridian of Montana, to be known as "DINSMORE'S ORCHARD HOMES' ADDITION NO. 4." And the streets shown on the annexed plan to be and hereby are granted and donated to the use of the public forever.

Samuel Dinsmore

Subscribed and sworn to before me this 5th day of August, A.D. 1901.

R. J. Jones

Notary Public in and for Missoula County, Montana.

STATE OF MONTANA } SS
COUNTY OF MISSOULA }

O.C. Finkelburg, being first duly sworn according to law, deposes and says that he is the engineer under whose supervision the survey and plan hereon were made, in Missoula County, Montana, that the annexed plan is a correct representation and diagram, and that said addition is laid out according to the law, and that the width of the streets and the measurements of the lots and the posts for reference points are correctly represented on said plan.

O.C. Finkelburg

Subscribed and sworn to before me this 5th day of September, A.D. 1901.

R. J. Jones

Notary Public in and for Missoula County, Montana.

STATE OF MONTANA } SS
COUNTY OF MISSOULA }

I hereby certify that the foregoing instrument was filed in my office on the 5th day of September, A.D. 1901, at 4:52 o'clock P. M., and is recorded on page 10 of plats, of the records of Missoula County.

H. J. Wilkinson

Clerk and Recorder of Missoula County, Montana.

This plat is hereby approved this 6th day of September, A.D. 1901.

A. P. Dietjen
McRussell
Forlatimer

County Commissioners of Missoula County, Montana.

63

C-62

Subdivision No.

64

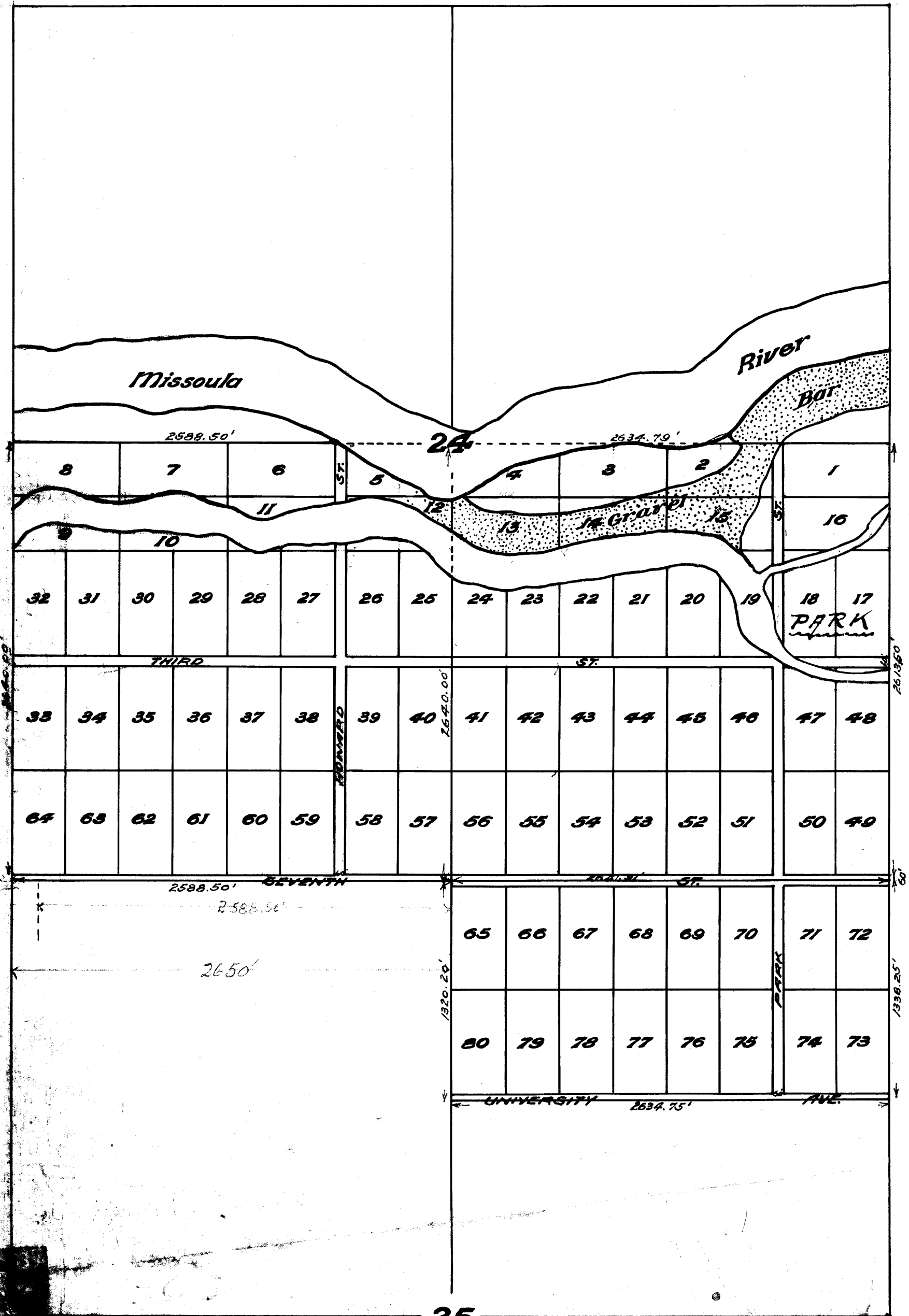
DINSMORE'S ORCHARD HOMES.

ADD. NO. 5.

AT MISSOULA, MONT.

- IN 5 ACRE TRACTS -

600 FT TO 1 IN.



STATE OF MONTANA } ss
COUNTY OF MISSOULA }

I, Samuel Dinsmore, do hereby certify that I have caused to be surveyed subdivided and platted, into lots and streets, the following described tract of land, to wit: - The South half (1/2) of Section Twenty-four (24) and the North half (1/2) of the North east Quarter (1/4) of Section Twenty-five (25), Township Thirteen (13) North, Range Twenty (20) West of the Principal Meridian of Montana, to be known as "DINSMORE'S ORCHARD HOMES ADDITION NO. 5", and the streets shown on the annexed plan, to be and hereby are granted and donated to the use of the public forever.

Samuel Dinsmore

Subscribed and Sworn to before me this 5th day of ~~Sept~~ ^{September} A.D. 1901.

R. Jones

Notary Public in and for Missoula County, Montana.

STATE OF MONTANA } ss
COUNTY OF MISSOULA }

O.C. Finkelnburg, being first duly sworn, according to law, deposes and says that he is the engineer under whose supervision the survey and plan hereon were made, in Missoula County, Montana, that the annexed plan is a correct representation and diagram, and that said addition is laid out according to the law and that the width of the streets, and the measurements of the lots, and the posts for reference points are correctly represented on said plan.

O.C. Finkelnburg

Subscribed and sworn to before me this 5th day of ~~Sept~~ ^{September} A.D. 1901.

R. Jones

Notary Public in and for Missoula County, Montana.

STATE OF MONTANA } ss
COUNTY OF MISSOULA }

I hereby certify that the foregoing instrument was filed in my office on the 5th day of ~~Sept~~ ^{September} A.D. 1901, at 4:22 o'clock p. M., and is recorded on page 10 of Plats of the Records of Missoula County.

H. J. Wickinson

Clerk and Recorder of Missoula County, Montana.

This Plat is hereby approved this 6th day of ~~Sept~~ ^{September} A.D. 1901

A. B. Gietzen

J. R. Russell

J. R. Robinson

County Commissioners of Missoula County, Montana.

64

13-20, 24-25

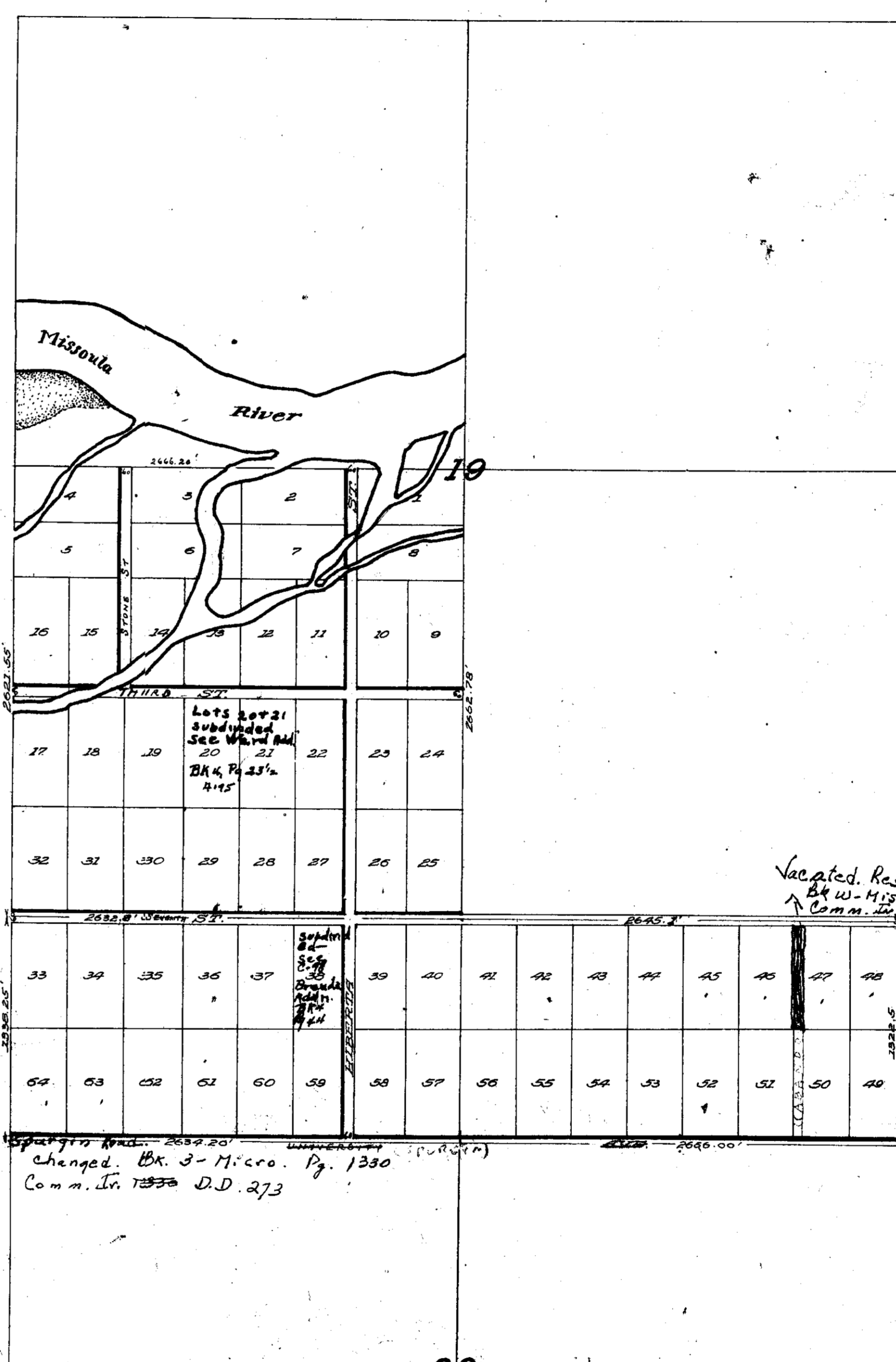
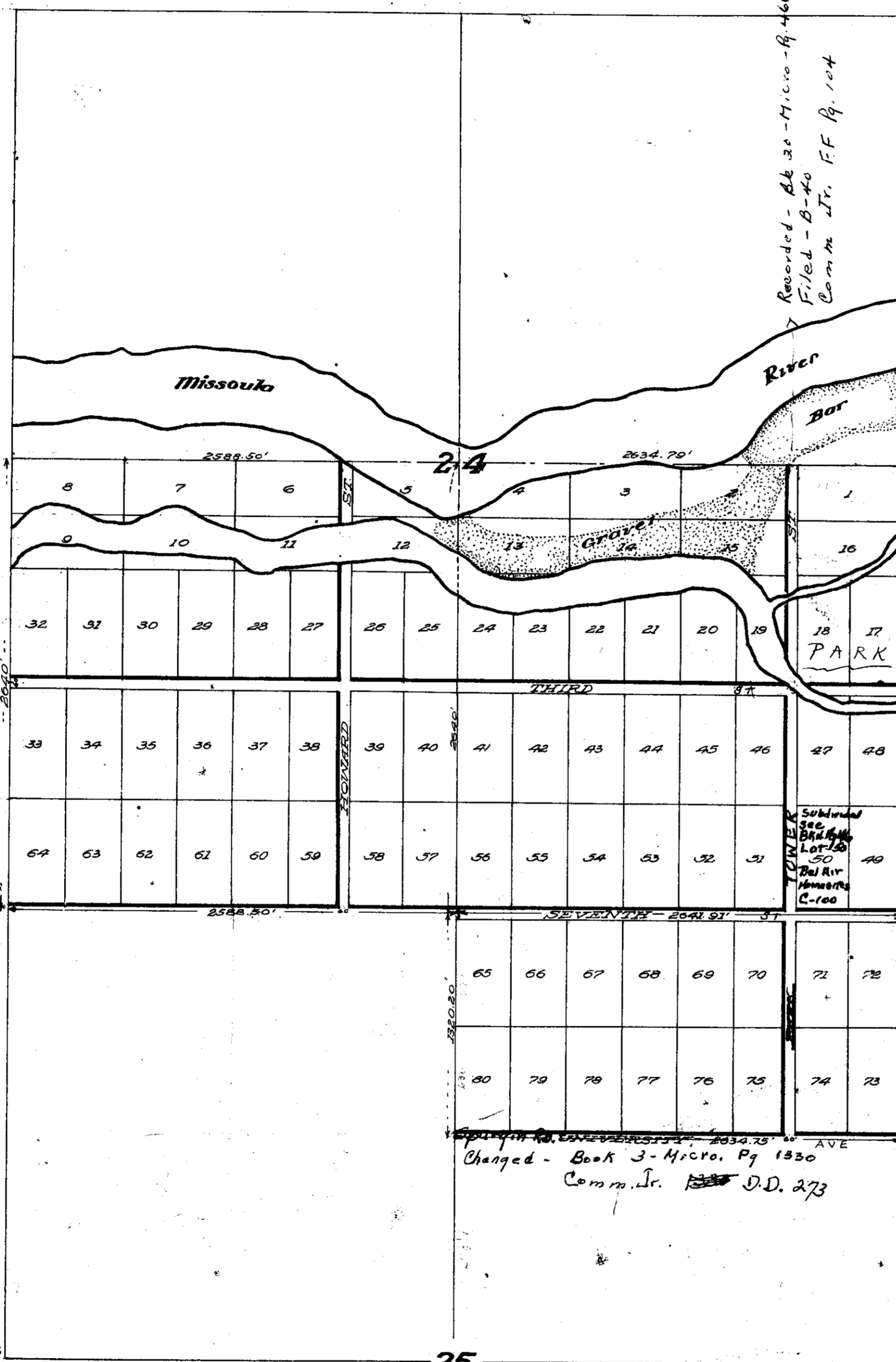
Q-63

(DINSMORE'S ORCHARD HOMES.)

600 FT. TO THE IN.

DINSMORE'S ORCHARD HOMES ADD. NO. 5. AT MISSOULA, MONT. IN 5 ACRE TRACTS 600 FT. TO 1 IN.

DINSMORE'S ORCHARD HOMES ADD. NO. 4. AT MISSOULA, MONT. IN 5 ACRE TRACTS 600 FT. TO 1 IN.



STATE OF MONTANA... I, Samuel Dinsmore, do hereby certify that I have caused to be surveyed, subdivided and platted into lots and streets, the following described tract of land to-wit: The South half (1/2) of the Southeast quarter (1/4) of Section Twenty Five (25), Township Thirteen (13) North, Range Twenty (20) West of the Principal Meridian of Montana, to be known as 'Dinsmore's Orchard Homes Addition No. 5' and the streets shown on the annexed plan to be and hereby are granted and donated to the use of the public forever.

STATE OF MONTANA... I, Samuel Dinsmore, do hereby certify that I have caused to be surveyed, subdivided and platted into lots and streets, as shown on the plan and certificate of survey herunto annexed, the following described tract of land to-wit: The South-West Quarter of Section Nineteen (19) and the North Half (1/2) of the Northwest Quarter (1/4) and the North Half (1/2) of the North East Quarter (1/4) of Section Thirty (30) Township Thirteen North, Range Twenty (20) West of the Principal Meridian of Montana, to be known as 'Dinsmore's Orchard Homes Addition No. 4' and the streets shown on the annexed plan to be and hereby are granted and donated to the use of the public forever.

STATE OF MONTANA... O.C. Finkelnburg being first duly sworn, according to law deposes and says that he is the engineer under whose supervision the survey and plan hereon were made in Missoula County, Montana, that the annexed plan is a correct representation and diagram, and that said addition is laid out according to the law, and that the width of the streets, and the measurements of the lots, and the posts for reference points are correctly represented on said plan.

STATE OF MONTANA... O.C. Finkelnburg, being first duly sworn, according to law deposes and says, that he is the engineer under whose supervision the survey and plan hereon were made in Missoula County, Montana; that the annexed plan is a correct representation and diagram, and that said addition is laid out according to the law, and the width of the streets and the measurements of the lots, and the posts for reference points are correctly represented on said plan.

STATE OF MONTANA... I hereby certify that the foregoing instrument was filed in my office on the 5th day of September, A.D. 1901, at 4:50 o'clock P.M. and is recorded on page 10 of plats of the Records of Missoula County, recorded on page 10 of plats of the Records of Missoula County, Montana.

STATE OF MONTANA... I hereby certify that the foregoing instrument was filed in my office on the 5th day of September, A.D. 1901, at 4:56 o'clock P.M. and is recorded on page 10 of plats of the records of Missoula County.

This plat is hereby approved this 6th day of September, A.D. 1901. A.P. Tietjen, W.B. Russell, J.R. Lehmer, County Commissioners of Missoula County, Montana.

This plat is hereby approved this 6th day of September, A.D. 1901. A.P. Tietjen, W.B. Russell, J.R. Lehmer, County Commissioners of Missoula County, Montana.

Date received Missoula County Clerk & Recorder's office, Jan 15, 1911. Letter of lifting of sanitation restriction Dated Nov 30, 1917 from the State Board of Health according to Chapter 95 of the Laws of Montana 1901 reg. No. 135 Addition by name Dinsmore's Orchard Homes filed by A.C. Tietjen

Date received Missoula County Clerk & Recorder's office, 12-22-75 letter of lifting of sanitation restriction Dated 12-10-75 in 28th from the State Board of Health according to Chapter 95 of the Laws of Montana 1901 reg. No. 135 Addition by name Dinsmore's Orchard Homes filed by Mary A. Tietjen

Date received Missoula County Clerk & Recorder's office, 4-4-76 letter of lifting of sanitation restriction Dated 3-24-76 from the State Board of Health according to Chapter 95 of the Laws of Montana 1901 reg. No. 135 Addition by name Dinsmore's Orchard Homes filed by Mary A. Tietjen

STATE OF MONTANA... SUBVEYOR'S CERTIFICATE... I, A.C. Tietjen, do hereby certify that the foregoing instrument was filed in my office on the 5th day of September, A.D. 1901, at 4:50 o'clock P.M. and is recorded on page 10 of plats of the Records of Missoula County, recorded on page 10 of plats of the Records of Missoula County, Montana.

Date received Missoula County Clerk & Recorder's office, July 15, 1975. Letter of lifting of sanitation restriction Dated June 11, 1975 from the State Board of Health according to Chapter 95 of the Laws of Montana 1901 reg. No. 135 Addition by name Dinsmore's Orchard Homes filed by Mary A. Tietjen