

Subdivision No.
1

①

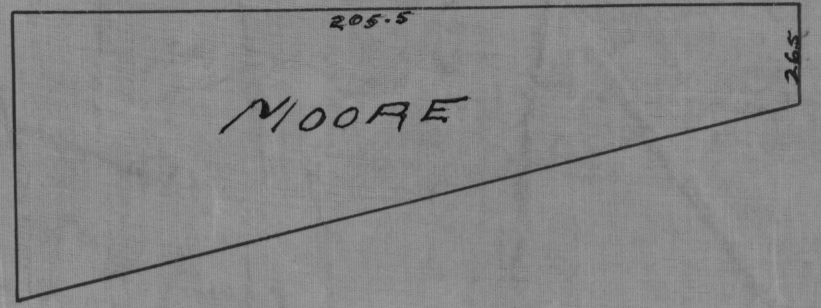
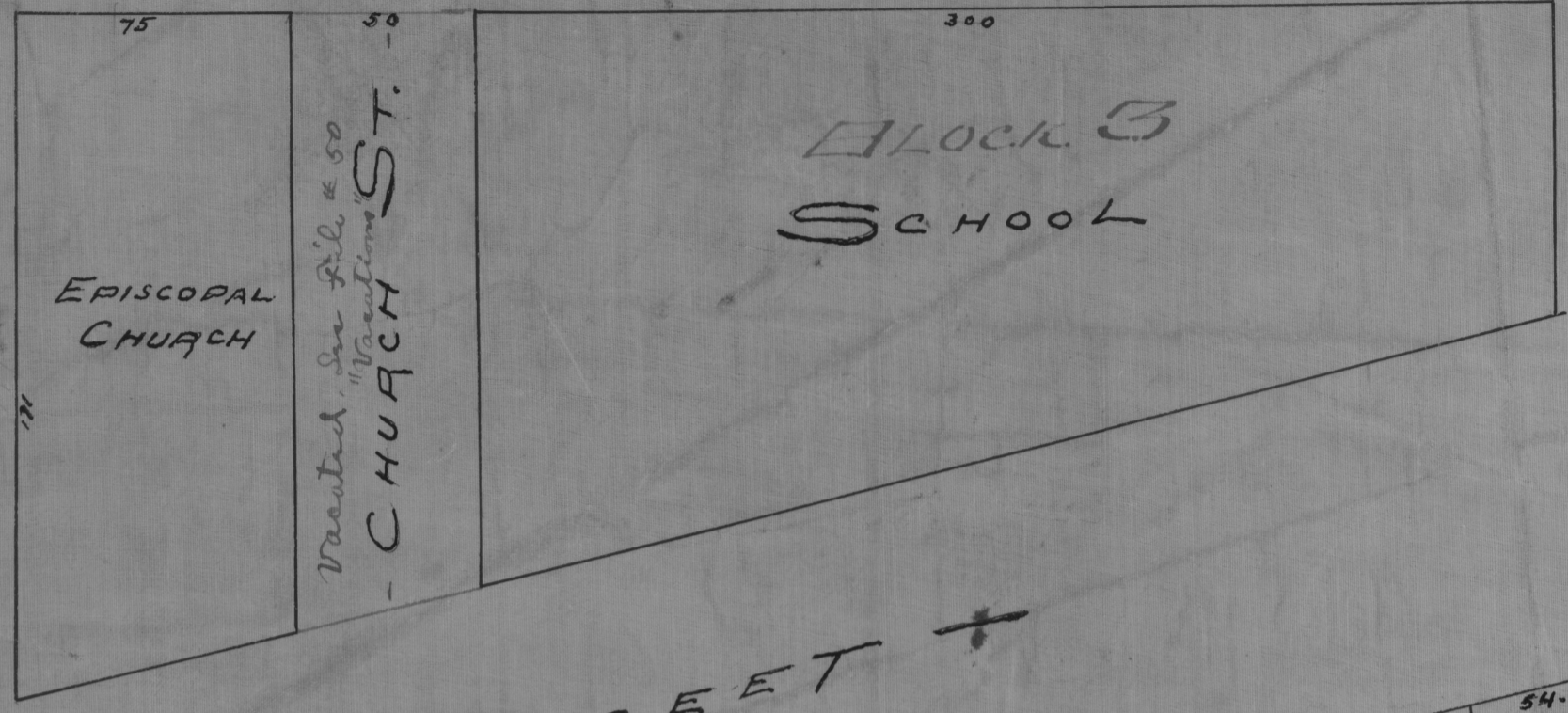
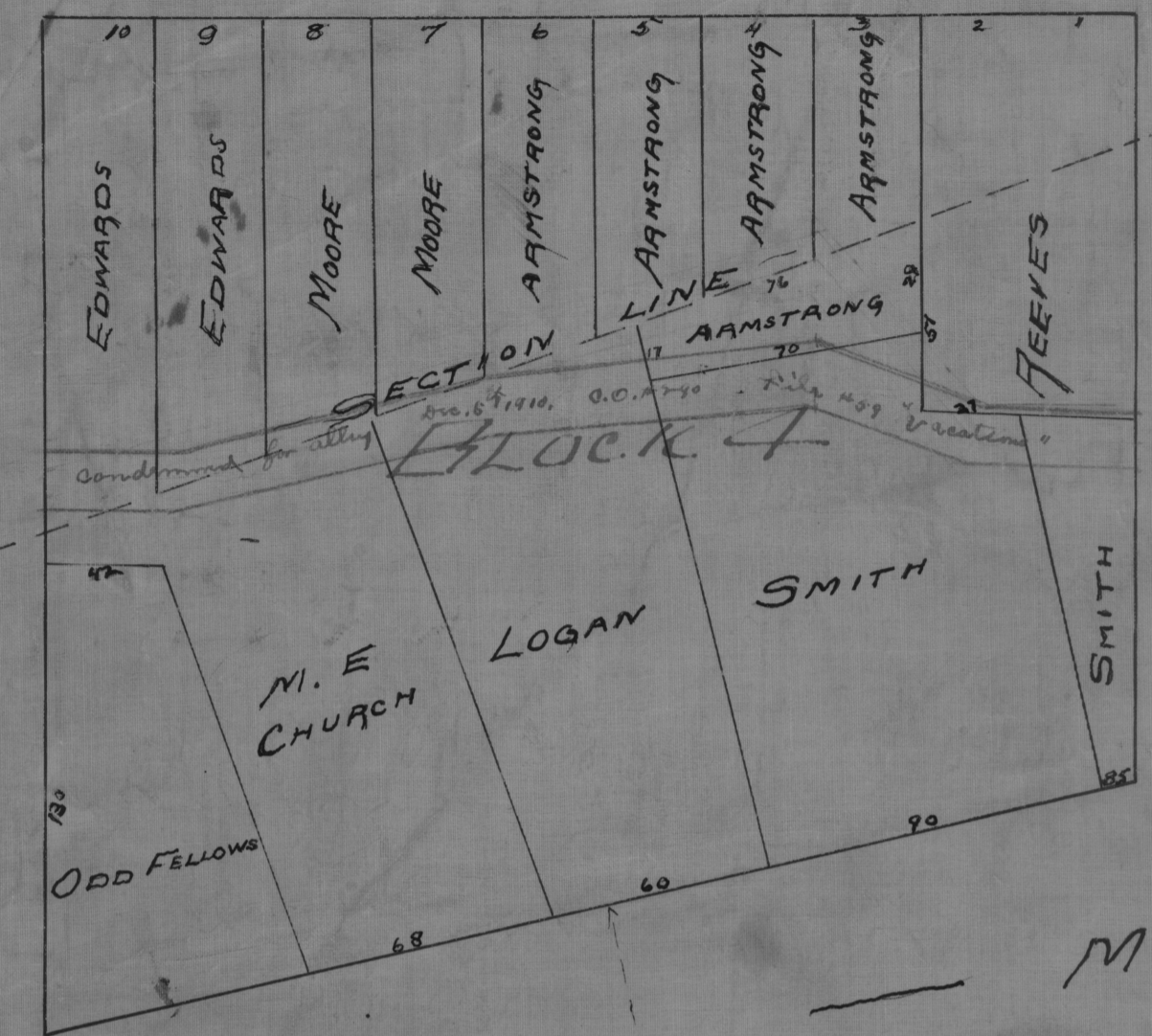


SUBDIVISION
T N R W Section
I

C-56

C-56

CEDAR STREET



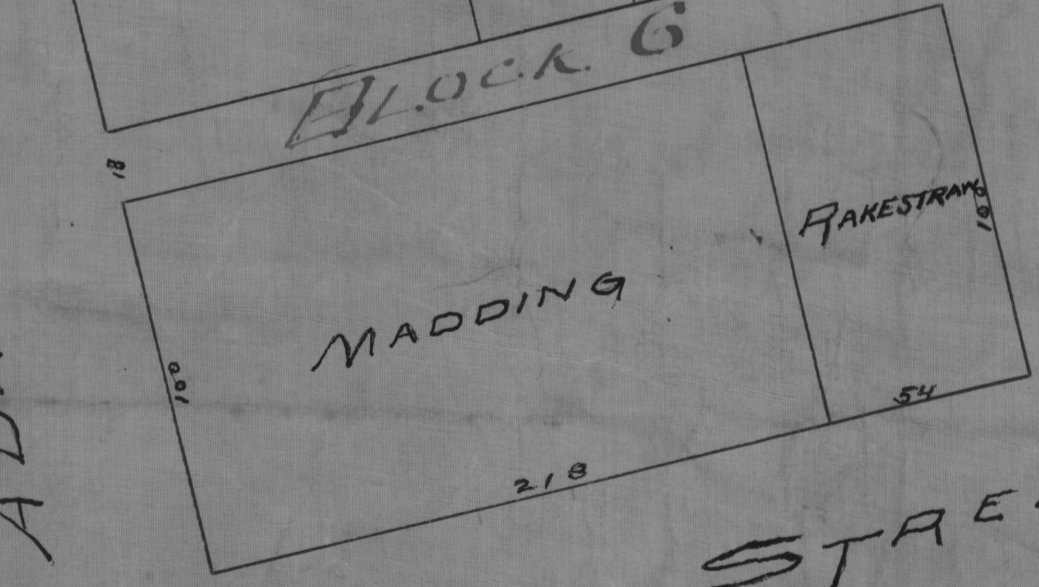
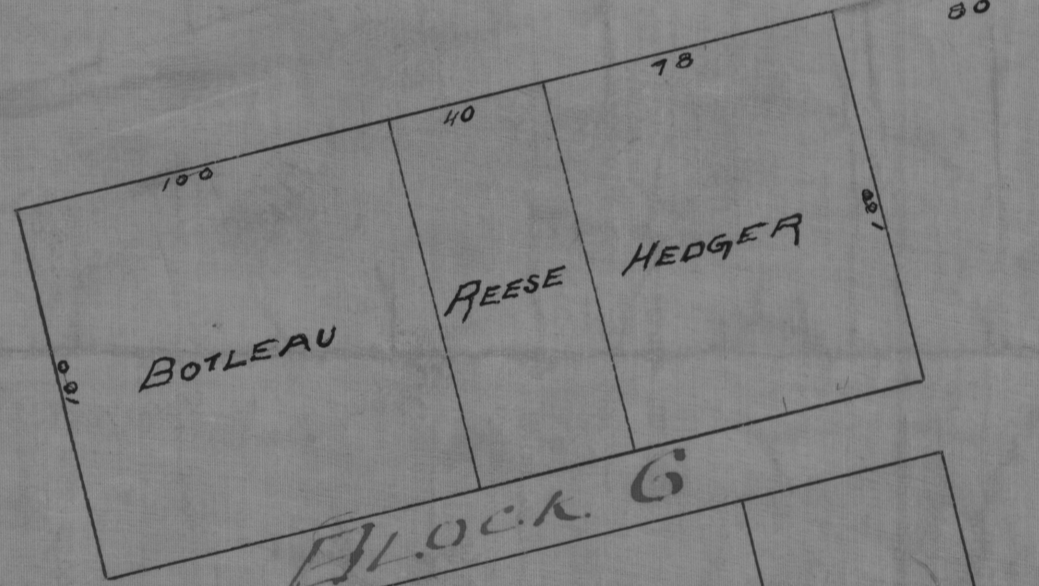
STREET

MAIN

80' ST.

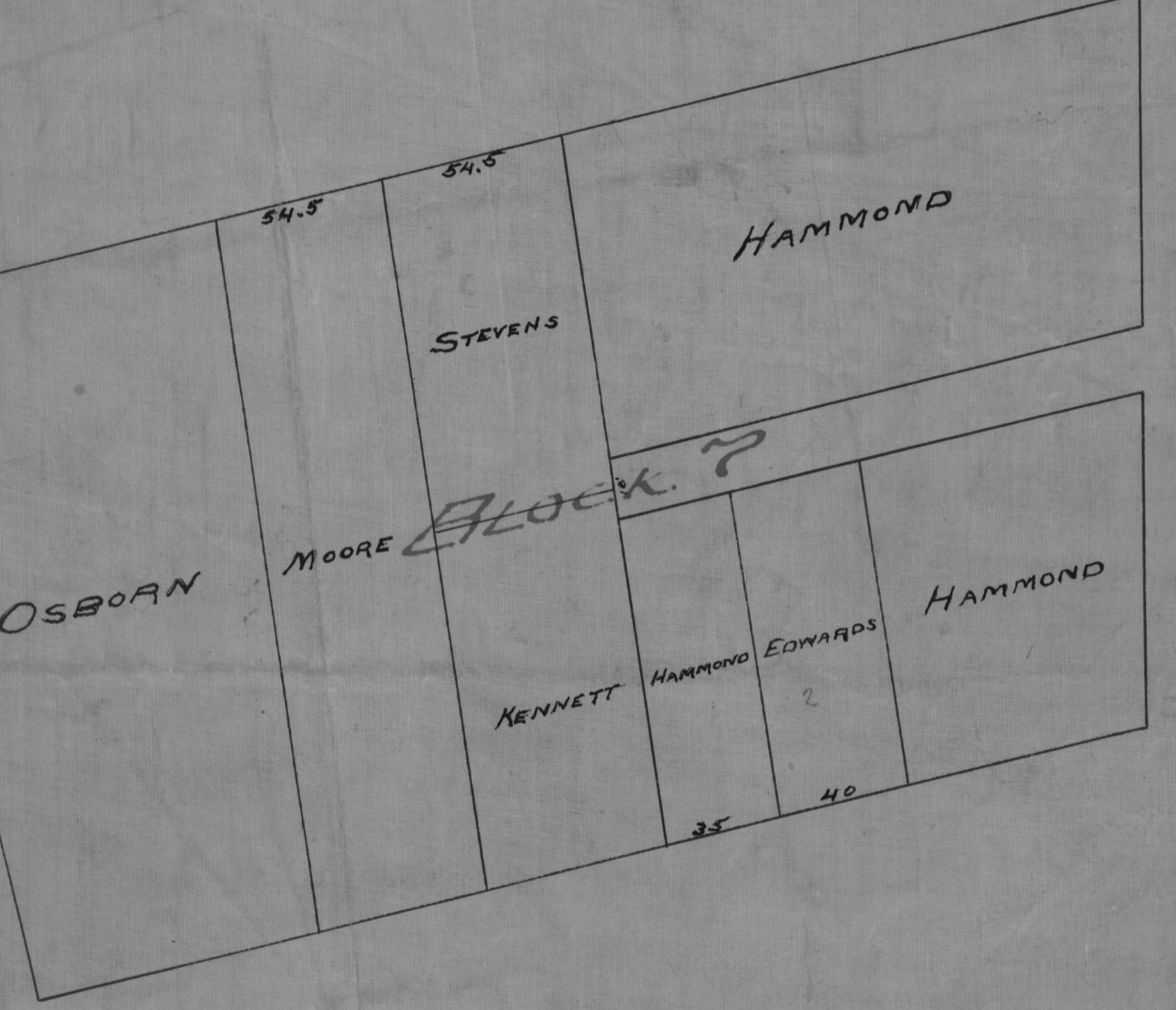
ADAMS

FRONT

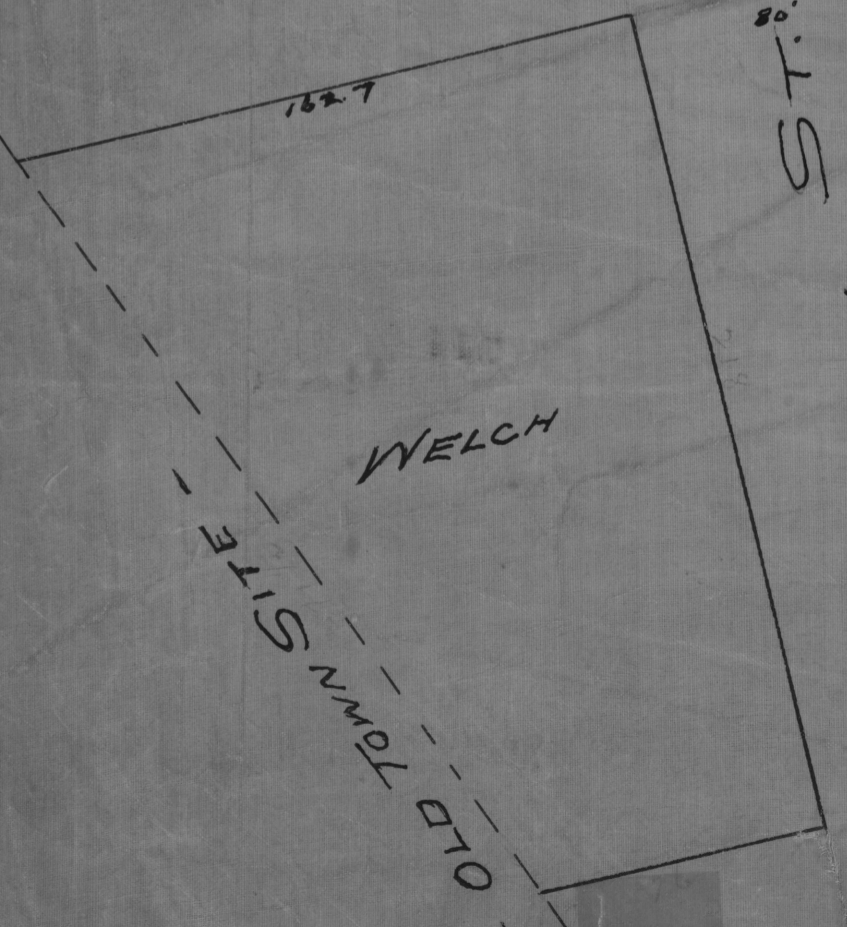


STREET

7

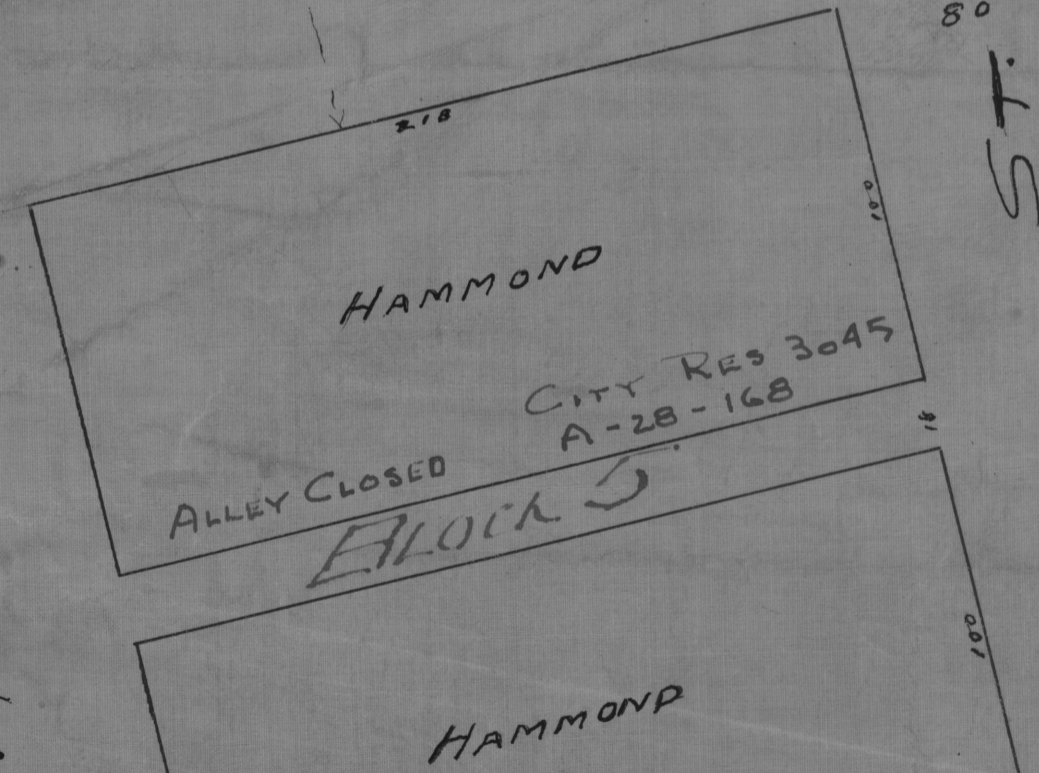


MADISON STREET



80' ST.

WASHINGTON



SUBDIVISION
T N R W Section

PART OF
-MCWHIRK'S ADDITION-
TO
TOWN OF MISSOULA
SCALE 50'=1"

G.F. Brooks
COUNTY SURVEYOR
3/1/88

See #16
BK 1
Pg 11

C-52



PART OF
McWhirks Addition
TO
TOWN OF MISSOULA
Scale 100' = 1"
G.F. Brooks
County Surveyor
3/1/08

THE McWHIRK ADDITION.

TO MISSOULA.

SCALE 200' = 1"

Note: This is scale used on original plat.

Filed in the Recorder's Office of Missoula County Montana Territory
on the 13th day of January A.D. 1882.
(Signed) H. J. Stephens
County Recorder

Territory of Montana }
County of Missoula }
I, S. D. Bogart, County Clerk of the County
do hereby certify that the above is a true and correct copy
of the original map or plat of The McWhirk Addition to Missoula
in witness whereof I have hereunto set my hand and the seal
of Missoula County this 6th day of September A.D. 1889.

Seal

STATE OF MONTANA)
County of Missoula)
SURVEYOR'S CERTIFICATE
I, R. J. Hall, on my oath depose and
say: That I am an engineer under whose supervision the above plat
was prepared and find this a true and correct copy of the original.
Compared this 27th day of January 1920.
ATTEST: R. J. Hall
County Surveyor

PL 15 422