

STATE OF MONTANA }  
COUNTY OF MISSOULA } ss:  
O. C. Finkelnburg, being duly sworn, says that he is the engineer under whose supervision the survey and plan herein were made, in Missoula County, Montana, that the annexed plan is a correct representation and diagram, and that said addition is laid out according to the law; and that the widths of the streets and the measurements of the lots, and the posts for reference points are correctly represented on said plan.  
O. C. Finkelnburg

Subscribed and sworn to before me this 14<sup>th</sup> day of September, A.D. 1902.  
R.R. Jones  
Notary Public in and for Missoula County, Montana.  
(SEAL)

STATE OF MONTANA }  
COUNTY OF MISSOULA } ss:  
We, Orchard Home Company Incorporated, do hereby certify that we have caused to be surveyed, subdivided and platted into lots and streets, the following described tract of land, shown by the plan and certificate of survey hereunto annexed, to-wit: The West 1/4 of the Southwest 1/4 of Section 25, the South 1/2 of the Southwest 1/4 of Section 26, the Northwest 1/4 of the Northeast 1/4, the Northwest 1/4, and the Northwest 1/4 of the Southwest 1/4 of Section 35, Township 13 North, Range 20 West of the Montana Principal Meridian, to be known and designated as "Orchard Home Company's Addition No. 6," and the streets shown on the annexed diagram to be and hereby are granted and donated to the use of the public forever.

Sam'l Dinsmore,  
President.  
Attest:  
W.V. Lawlor,  
Secretary.

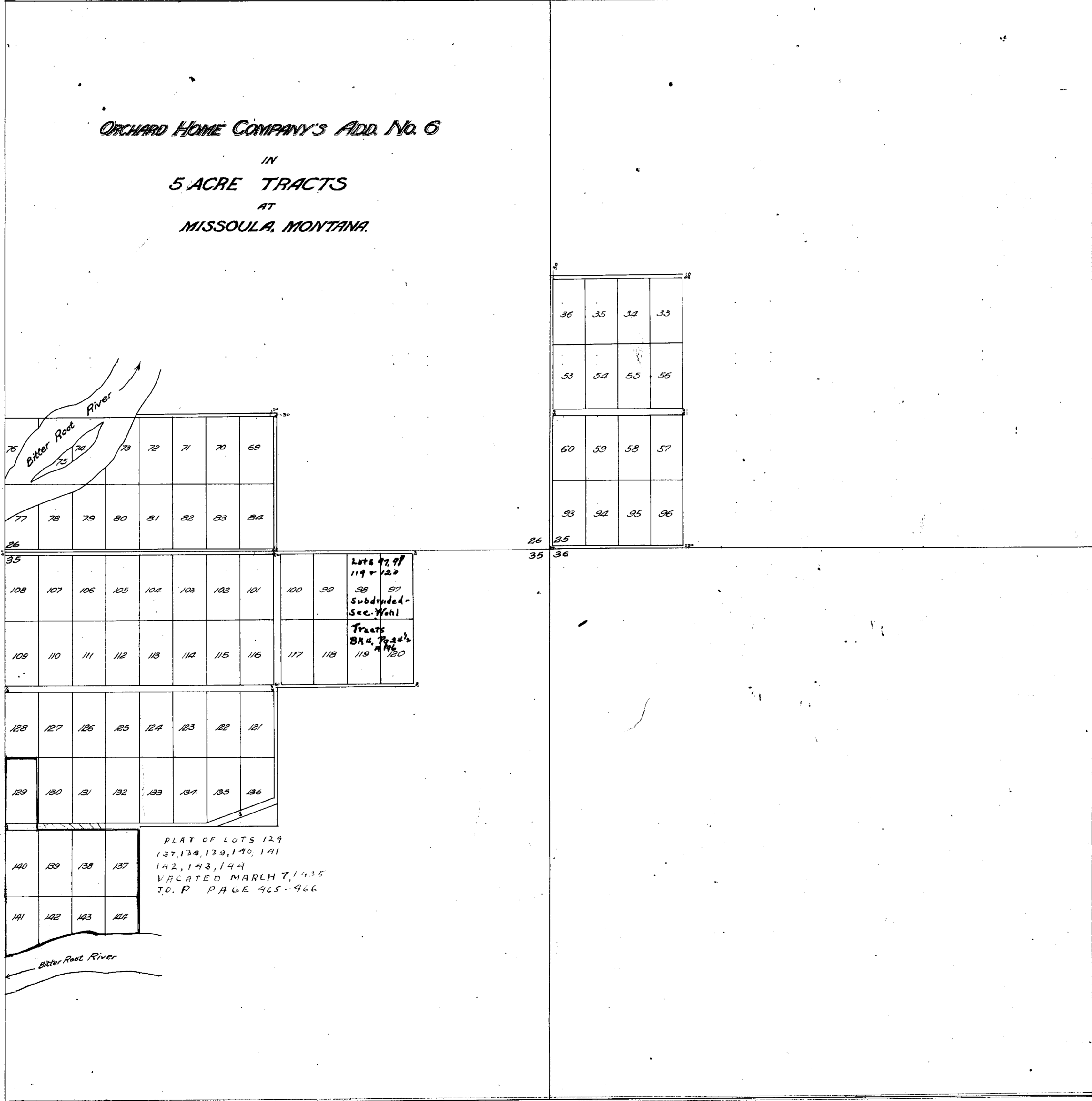
This plat is hereby approved this 23<sup>rd</sup> day of March A.D. 1903.  
John Bonner  
Peter Schuffe  
County Commissioners of Missoula County, Montana



STATE OF MONTANA }  
COUNTY OF MISSOULA } ss:  
I hereby certify that the foregoing instrument was filed in my office on the 15 day of November, A.D. 1902, at 10<sup>02</sup> o'clock A.M., and is recorded on page 17 of plots of Missoula County Records.  
H.T. Wilkinson  
Clerk and Recorder of Missoula County, Montana.  
(SEAL)

123-96-111  
123-96-110

ORCHARD HOME COMPANY'S ADD. NO. 6  
IN  
5 ACRE TRACTS  
AT  
MISSOULA, MONTANA.



PLAT OF LOTS 129  
137, 138, 139, 140, 141  
142, 143, 144  
VACATED MARCH 7, 1935  
T.O.P. PAGE 465-466

Data received Missoula County  
Clerk & Recorder's office, May 23, 1975  
Letter of lifting of restriction dated May 23, 1975  
from the State Board of Health  
according to Chapter 95 of the  
Laws of Montana, 1961 reg. No.  
1986 Addition by name *Richard Jones*  
Company's Plat 6, 5385.20' Lot 70 only #257  
Filed by *Wanna Lawrence*

STATE OF MONTANA }  
County of Missoula } ss:  
SURVEYOR'S CERTIFICATE  
I, *R.J. Hale*, on my oath depose and say: That I am an engineer under whose supervision the above plat was correctly and truly filed this 27<sup>th</sup> day of January, 1925.  
Completed this 27<sup>th</sup> day of January, 1925.  
ATTEST:  
*R.J. Hale*  
Engineer  
Subscribed and sworn to before me this 27<sup>th</sup> day of January, 1925.  
Notary Public in and for Missoula County, Montana.