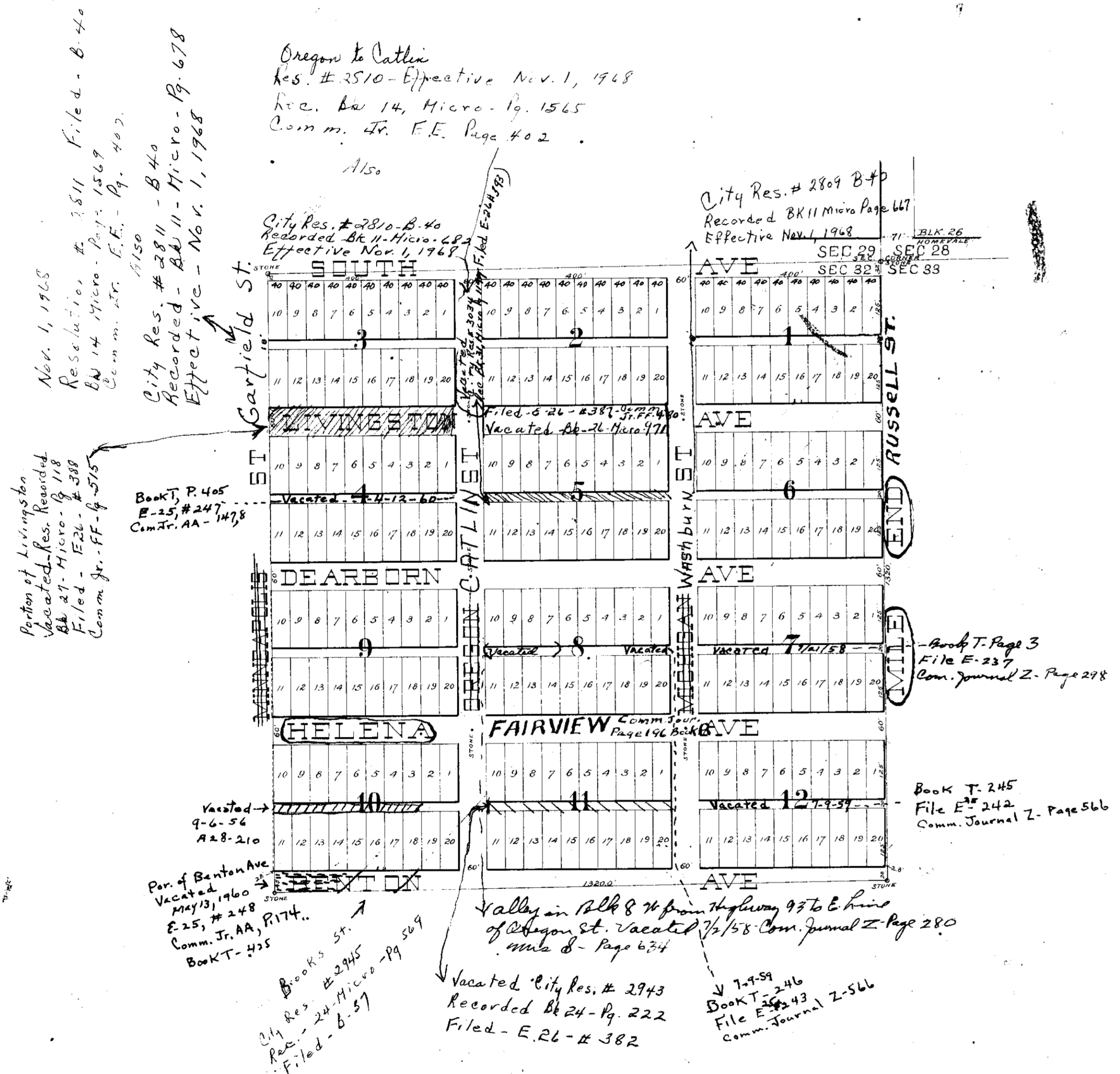


PLAT OF CENTRAL

Situated in the NE¹/₄ of NE¹/₄ of Sec. 32
Town 13 N. Range 19 W.
1st Dist. Mont.
Nov 1889. Scale 200' = 1" G. F. Brooks Esq.



Know ye that I Jesse A. Armitage Trustee being the owner in fee of all the land embraced in Central being the North East Quarter of the North East Quarter of Section Thirty two, Township thirteen North, Range Nineteen West, have caused the same to be surveyed and platted as shown in said plat and intend to file the same as a public record to be known and designated as Central and I do declare the streets and alleys therein as shown by said plat to be public and they are hereby dedicated to public use.

In witness whereof we have hereunto set our hands and seals this the 2nd day of Dec 1889

Jesse A. Armitage

State of Montana }
County of Missoula } ss

On this 2nd day of Dec 1889 before me J. H. Fairchild a Notary Public in and for Missoula County, Montana personally appeared Jesse A. Armitage Trustee personally known to me to be the same person described in and who executed the foregoing instrument of dedication and who acknowledged to me that he executed the same freely and voluntarily and for the uses and purposes therein mentioned.

In witness whereof I have hereunto set my hand and official seal this the day and date first above written

J. H. Fairchild
Notary Public

State of Montana }
County of Missoula } ss

George F. Brooks being duly sworn on his oath deposes and says that he is a civil engineer that in the month of November 1889 I executed a survey of the lots blocks streets and alleys represented by this map and called Central that said Central was surveyed and laid out according to his map that the streets and avenues are sixty feet wide, the alleys are all twenty feet wide, the lots are forty feet by one hundred and twenty five feet and the blocks are two hundred and seventy feet by four hundred feet. I planted permanent stones at all street intersections in accordance with the law.

Geo. F. Brooks

Subscribed and sworn to before me this 2nd day of Oct 1889

J. H. Fairchild
Notary Public

State of Montana }
County of Missoula } ss

We J. E. Marion, A. Wittmer and H. Therriault County Commissioners in and for the County and State aforesaid do hereby certify that this map or plat of Central was by us approved on this the 2nd day of December A.D. 1889.

In witness whereof we have hereunto set our hands and the seal of Missoula County this the 2nd day of December 1889

J. E. Marion Chairman
A. Wittmer
Henry Therriault } Commissioners

I certify that I received and filed this instrument for Record on the 2nd day of Dec 1889 at 11⁰⁰ o'clock P. M.

D. V. Bogart
County Recorder

STATE OF MONTANA }
County of Missoula } ss

SURVEYOR'S CERTIFICATE

I, R. J. Dale, on my oath deposes and says that I am a civil engineer and in my supervision the above plat was compared and found to be a true and correct copy of the original.

Compared this 2nd day of January 1889

ATTEST: R. J. Dale
Surveyor for Missoula County, Montana

Subscribed and sworn to before me this 1st day of Jan 1889

W. D. Anderson
County Recorder in and for Missoula County, Montana