

PLAT Showing Subdivision of Block 4 and South 1/2 of Block 3, HOMEVALE ADD.

I, R. H. Hale, on my oath deposes and says that as an engineer under whose supervision the above plat was compared and filed this is a full, true and correct copy of the original Compared this 28th day of January 1925

ATTEST: R. H. Hale, County Clerk and Recorder in and for Missoula County, Montana

Subscribed and sworn to before me this 28th day of Feb 1925

E. S. DORMAN, Being duly sworn on his oath deposes and says he is a mining engineer that in the month of August 1903, he executed a survey of the S 1/2 of Block 3 and all of Block 4 of HOMEVALE into lots, that said lots are thirty feet wide by one hundred twenty feet long except those designated as lots number 13 of block 3 and 12 and 13 of block 4 which are forty-five and five-tenths feet wide by one hundred twenty feet long.

E. S. DORMAN, Subscribed and sworn to before me this 5th day of August 1903. Dan H. Ross, Notary Public.

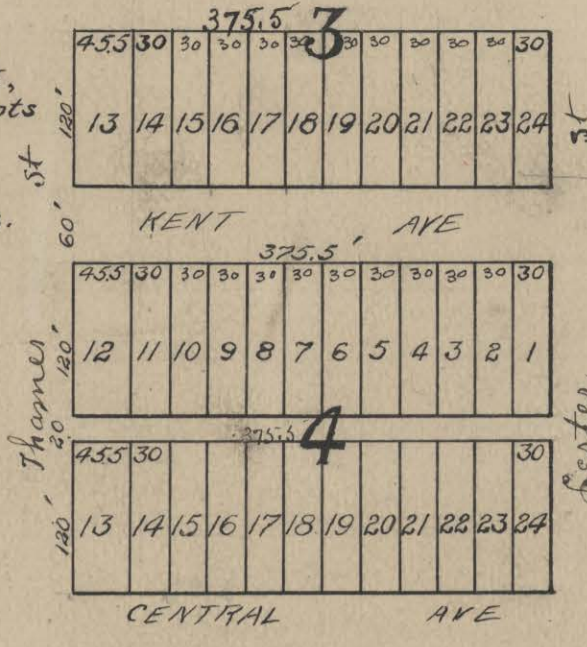
Approved Aug 10th 1903 Board of County Commissioners John Benner, August Hollenstainer, Peter Schaeffer.

Know Ye, that J.A. Scott being the owner of the S 1/2 of block 3 and all of block 4 in HOMEVALE, have caused to be surveyed and platted into lots as shown by the accompanying plat.

In witness whereof I have hereunto set my hand and seal this 3rd day of August 1903. J.A. Scott.

I certify that I received and filed this instrument for record on the 5th day of August 1903, at 2:35 P.M.

Geo Pringle, County Recorder, Missoula County Montana

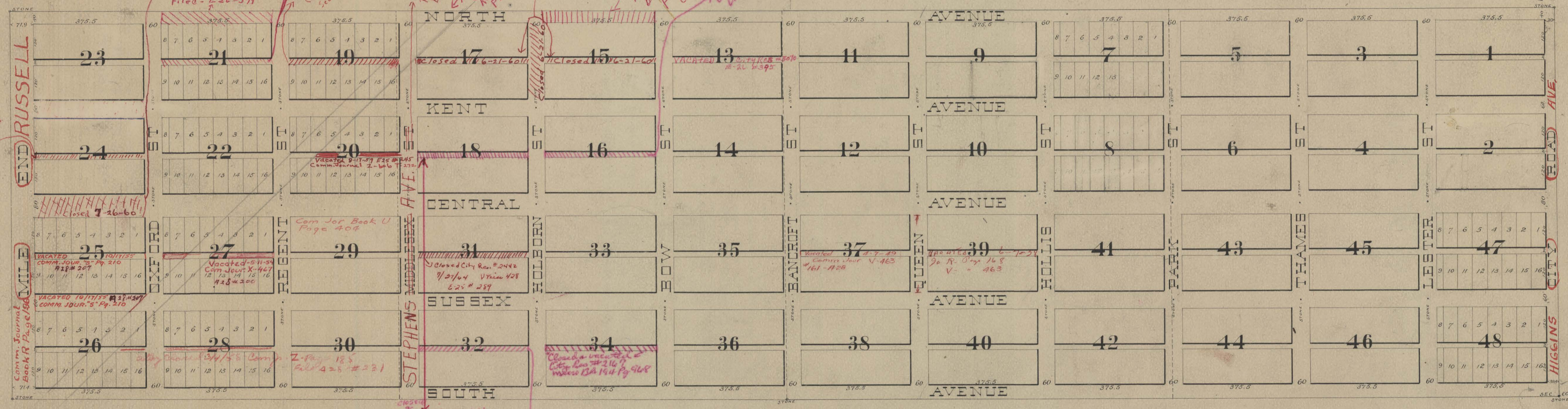


HOMEVALE

SITUATED IN SOUTH QUARTER SEC 28

TOWN 13N R10W

SCALE 200' = 1 INCH



Know ye, that S. John Cornish being the owner in fee of all the land embraced in Homevale, being the South Quarter of Section Twenty Eight, Town 13 North Range 19 West, have caused the same to be surveyed and platted as shown in said plat and intend to file the same as a public record to be known and designated as HOMEVALE, and I do declare the streets and alleys therein as shown by said plat to be public and they are hereby dedicated to public use. In witness whereof I have hereunto set my hand and seal this the 13th day of November 1889. John Cornish

State of Montana } County of Missoula } ss. Geo F. Brooks being duly sworn on his oath deposes and says that he is a civil engineer, that in the month of October 1889, I executed a survey of the blocks, streets and alleys represented by this map and called HOMEVALE, that said Homevale was surveyed and laid out according to this map, are sixty feet wide, except Central Ave which is eighty feet wide, and North and South Avenues which are forty feet wide each. The alleys are all twenty feet wide and the blocks are three hundred and seventy five and five tenths feet by two hundred and eighty feet. I planted permanent stones at all street intersections in accordance with the law. Geo F. Brooks

State of Montana } County of Missoula } ss. On this 13th day of Nov 1889 before me J.H. Fairchild, Notary Public in and for Missoula County Montana personally appears John Cornish personally known to me to be the same person described in and who executed the foregoing instrument of dedication and who acknowledged to me that he executed the same freely and voluntarily for the uses and purposes therein mentioned. In witness whereof I have hereunto set my hand and official seal this the day and date first above written. J.H. Fairchild, Notary Public

State of Montana } County of Missoula } ss. We J.E. Marion, A. Millouer and H. Therriault County Commissioners in and for the county and state aforesaid do hereby certify that this map or plat of Homevale was by us approved on this the 2nd day of December 1889. In witness whereof we have hereunto set our hands and the seal of Missoula County this the 2nd day of December 1889. J.E. Marion, Chairman; A. Millouer, H. Therriault, Commissioners

Subscribed and sworn to before me this 1st day of Nov 1889. J.H. Fairchild, Notary Public

Note: Made to Commissioners Chamberlaine Book 5 page 48 for filing

STATE OF MONTANA, County of Missoula, ss. SURVEYOR'S CERTIFICATE. I, R. H. Hale, on my oath deposes and says that as an engineer under whose supervision the above plat was compared and filed this is a full, true and correct copy of the original. Compared this 28th day of January 1925. ATTEST: R. H. Hale, County Clerk and Recorder in and for Missoula County, Montana. Subscribed and sworn to before me this 28th day of Feb 1925.