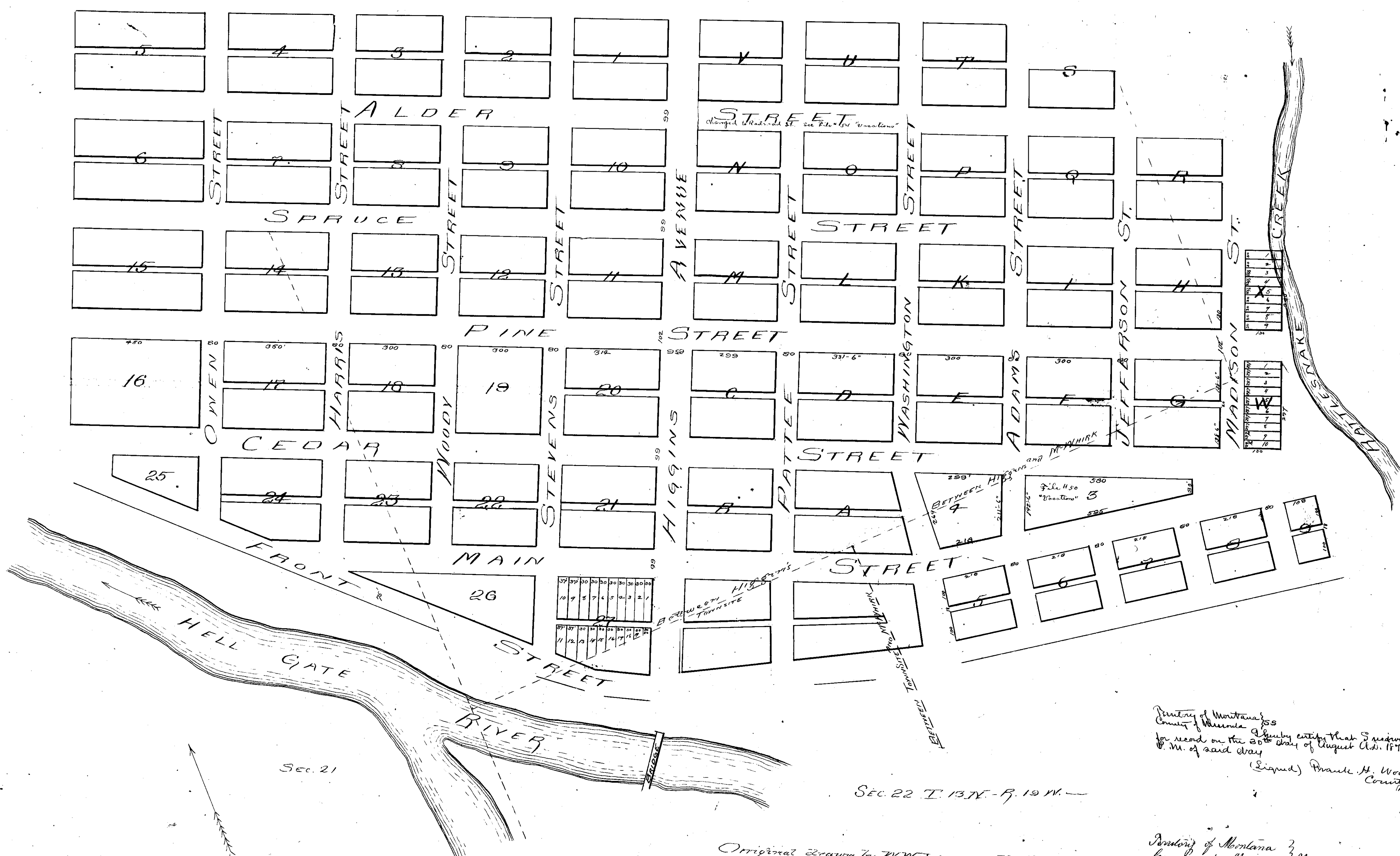


X
MISSOULA
Scale 1/4" = 1'



County of Montana
 County of Missoula
 I, D. D. Rogart, County Clerk of the County of Missoula, do hereby certify that I received this plat for record on the 26th day of August A.D. 1875 at 2 o'clock P.M. of said day.
 (Signed) Darius H. Woody, County Recorder, Missoula, Montana, Secretary.

Original drawn by W.W. Johnson, Nov. 1874.

County of Montana
 County of Missoula
 I, D. D. Rogart, County Clerk of the County of Missoula, do hereby certify that the above is a true and correct copy of the original Map of the City of Missoula.
 In Witness Whereof, I hereunto set my hand and the seal of Missoula County this 6th day of September, 1889.
 D. D. Rogart
 County Clerk

