

STATE OF MONTANA, SURVEYOR'S CERTIFICATE  
 County of Missoula, ss. I, A. Hale, on my oath depose and say: That I am the Surveyor whose supervision the above plat was prepared and filed in my office, and that I am a true and correct copy of the original.  
 Compared this 29th day of January, 1925  
 ATTEST: A. Hale  
 Surveyor for Missoula County, Montana  
 Subscribed and sworn to before me this 26th day of Jan, 1920  
W. H. Stenstrom  
 Mayor and Recorder for Missoula County, Montana



FLAT OF THE  
**D No K ADDITION**  
 TO THE  
 CITY OF MISSOULA  
 Scale 200' = 1"

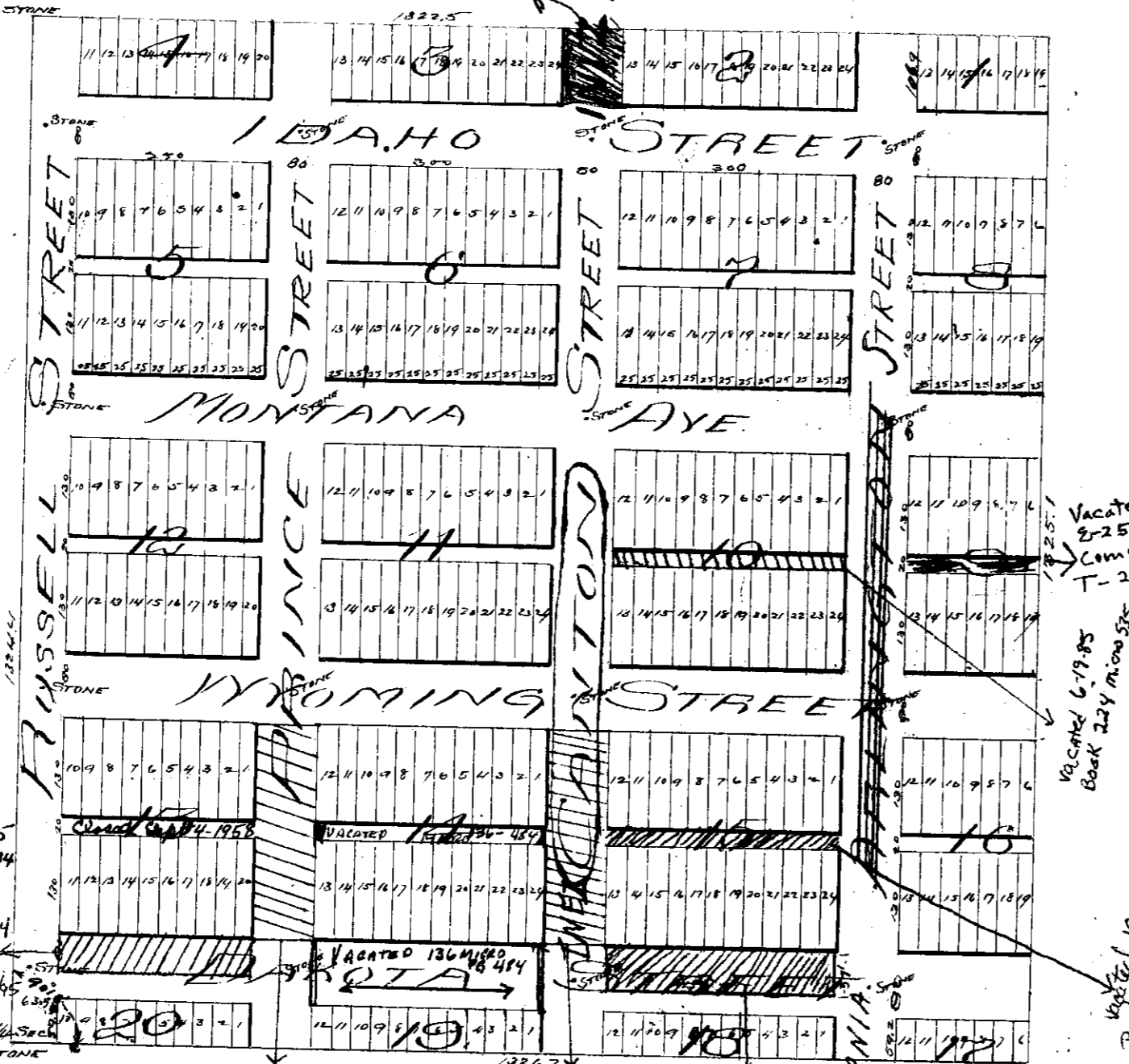
Know Ye that we, Joseph DeChamps and Frank P. Kern by my attorney in fact James H. P. Ryan, possess in fee all the land described in and covered by the approved plat and being a portion of the North half of the South East quarter of Section Twenty One, 12 North Range 19 West, to be surveyed and platted as shown in said plat and we intend to file the same with the County and designated as the D K Addition to the City of Missoula. That all the streets and alleys as shown on said plat are hereby declared public and dedicated to public use.  
 In witness whereof I have hereunto set my hand and seal this 23rd day of January A.D. 1890  
Joseph DeChamps  
Frank P. Kern  
James H. P. Ryan  
 My Attorney in fact.

State of Montana }  
 County of Missoula } On this 3rd day of January 1890 before the undersigned a Notary Public in and for Missoula County, State of Montana personally came Joseph DeChamps and Frank P. Kern by their attorney in fact James H. P. Ryan personally known to me to be the same persons described in and who executed the foregoing instrument of dedication and who acknowledged to me that he executed the same freely and voluntarily and for the uses and purposes therein mentioned.  
 In witness whereof I have hereunto set my hand and Notarial seal the day and year first herein written  
James H. P. Ryan  
 Notary Public

State of Montana }  
 County of Missoula } George F. Brooks being first duly sworn on oath says: I am a civil engineer; that during the month of December 1889 he executed a survey of the lots, blocks, streets and alleys represented by this plat and called the D K Addition to the City of Missoula, that the said addition was surveyed and laid out according to this plat; that the streets are eight feet wide and the alleys are twenty feet wide and all monuments are placed as shown and in accordance with the law.  
 Subscribed and sworn to before me this 23rd day of January 1890  
Geo. F. Brooks  
 Notary Public

State of Montana }  
 County of Missoula } We, J. E. Marion, A. Wittow and H. P. Berrault, County Commissioners in and for the City of Missoula and state as we said as hereby certify that this map or plat of D K Addition to the City of Missoula was by us approved on the 6th day of January A.D. 1890.  
 In witness whereof we have hereunto set our hands and seal of Missoula County this 6th day of January A.D. 1890.  
J. E. Marion Chairman of Board  
A. Wittow  
H. P. Berrault Commissioners.  
 Filed for record January 6th 1890 at 12:5 o'clock P.M.  
A. D. Bogart  
 Co. Recorder.

Deed received Missoula Case #  
 Clerk & Records office 8-27-76  
 Dated of lifting of said deed  
 restriction Dated 11-17-76 # 358  
 from the State Board of Land  
 according to Chapter 95 of the  
 Laws of Montana 1961 reg. No.  
 135 Addition by name  
 filed by Springfield (Certificate of survey # 955)



FLAT OF  
 THE  
**EDDY ADDITION**  
 Scale 200' = 1"

Know Ye that I, A. D. Hammond being the president of the South Missoula Land Company, possess in fee all the land embraced in the Eddy Addition, Section 21, Township 13 North Range 19 West, that I have caused the same to be surveyed and platted as shown in said plat and intend to file the same as a public record to be known and designated as the Eddy Addition and I do declare the streets and alleys shown as shown by said plat to be public and they are hereby dedicated to public use.  
 In witness whereof I have hereunto set my hand and seal this the 6th day of Jan. 1890  
South Missoula Land Co  
A. D. Hammond and Pres.

State of Montana }  
 County of Missoula } On this 6th day of Jan 1890 before the undersigned a Notary Public in and for Missoula County, State of Montana personally came A. D. Hammond personally known to me to be the same person described in and who executed the foregoing instrument of dedication and who acknowledged to me that he executed the same freely and voluntarily for the uses and purposes therein mentioned.  
 In witness whereof I have hereunto set my hand and of public seal this the day and date first above written.  
Geo. B. P. Ryan  
 Notary Public

State of Montana }  
 County of Missoula } George F. Brooks being first duly sworn on his oath deposes and says that he is a civil engineer; that in the month of December 1889 he executed a survey of the blocks, lots, streets and alleys represented by this plat and called the Eddy Addition, that said Addition was surveyed and laid out according to this plat; that the streets are eight feet wide and the alleys are twenty feet wide and all monuments are placed as shown and in accordance with the law.  
 Subscribed and sworn to before me this 6th day of Jan 1890  
Geo. F. Brooks  
 Notary Public

State of Montana }  
 County of Missoula } We, J. E. Marion, A. Wittow and H. P. Berrault, County Commissioners in and for the City of Missoula and state as we said as hereby certify that this map or plat of Eddy Addition was by us approved on this the 6th day of January A.D. 1890. In witness whereof we have hereunto set our hands and the seal of Missoula County this sixth day of January A.D. 1890.  
J. E. Marion Chairman of Board  
A. Wittow  
H. P. Berrault Commissioners  
 Filed for record Jan 6th 1890 at 1:05 o'clock P.M.  
A. D. Bogart  
 Co. Recorder

STATE OF MONTANA, SURVEYOR'S CERTIFICATE  
 County of Missoula, ss. I, A. Hale, on my oath depose and say: That I am the Surveyor whose supervision the above plat was prepared and filed in my office, and that I am a true and correct copy of the original.  
 Compared this 29th day of January, 1925  
 ATTEST: A. Hale  
 Surveyor for Missoula County, Montana  
 Subscribed and sworn to before me this 26th day of Jan, 1920  
W. H. Stenstrom  
 Mayor and Recorder for Missoula County, Montana