

OK

Centre Line N. P. R. R.

PLAN OF  
W. J. M<sup>rs</sup> Cormick's Addition  
to the  
TOWN OF MISSOULA.

Scale: 200 feet to an inch.

Sept. 5<sup>th</sup> 1882.  
H.W.W.

24  
50



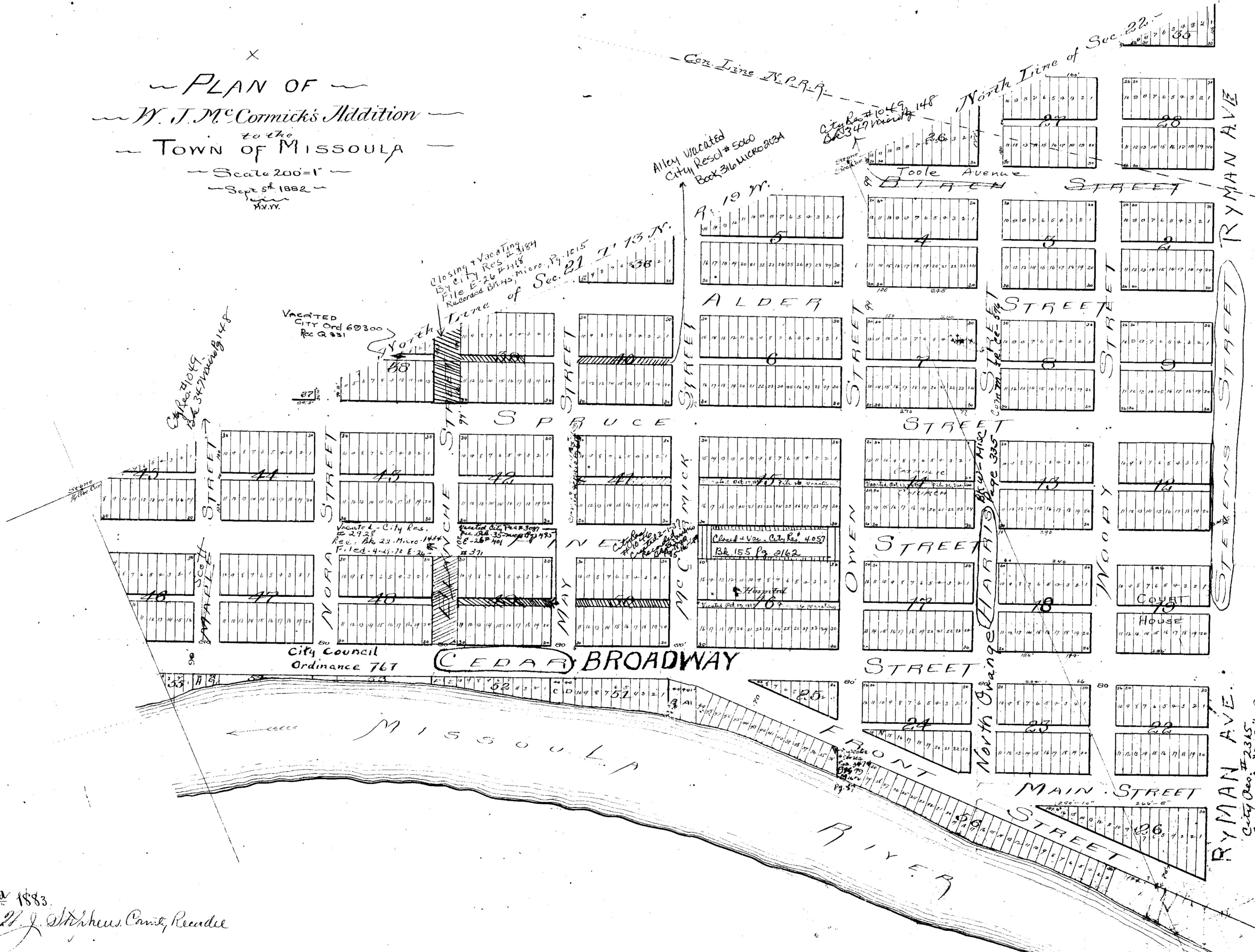
MISSOULA

RIVER

Filed for Record  
January 3<sup>rd</sup> 1883  
W. J. Stephens County Recorder



X  
 ~ PLAN OF ~  
 ~ W. J. McCormick's Addition ~  
 to the  
 ~ TOWN OF MISSOULA ~  
 ~ Scale 200=1 ~  
 ~ Sept 5th 1882 ~  
 M.V.V.



Filed for Record  
 January 3rd 1883.  
 (Signed) W. J. Stephens, County Recorder

Territory of Montana }  
 County of Missoula }  
 I, D. D. Boyant, County Clerk of the  
 County aforesaid, do hereby certify that  
 the above is a true and correct copy  
 of the original Plan of W. J. McCormick's  
 Addition to the Town of Missoula.  
 In Witness whereof, I have hereunto set my hand and  
 the Seal of Missoula County this 6th day of September A.D. 1889  
 D. D. Boyant  
 County Clerk

Ryman Ave.  
 City Ord. #2345  
 Cont. in J. B. B., Pg. 274