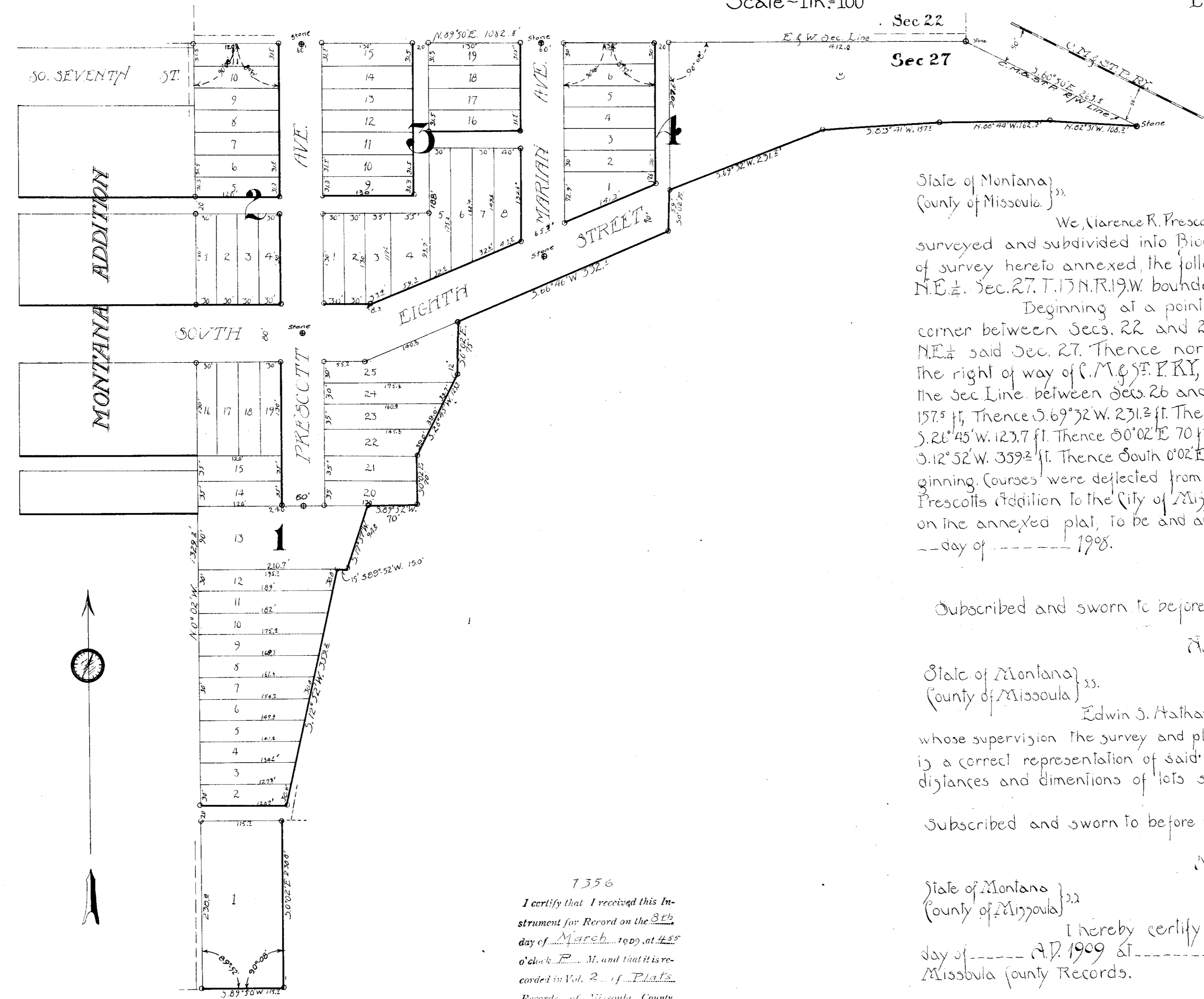


# Plat Prescotts Addition

TO  
City of Missoula - Mont.  
Comprising a portion of NE 1/4, NE 1/4, Sec. 27, T. 13 N. R. 19 W.  
MISSOULA COUNTY, MONTANA.

Scale - 1 in = 100

E. O. Hathaway - C.E.



Legend  
• Iron Pins  
• Stone below surface.

This Addition was filed Jan 11, 1909 by order of the Board of County Commissioners, Missoula, Montana, File No. 347

State of Montana }  
County of Missoula }

We, Clarence R. Prescott and Julia, his wife, do hereby certify that we have caused to be surveyed and subdivided into Blocks, Lots, Streets, and alleys, as shown by the plat and certificate of survey hereto annexed, the following described tract of land - to-wit, being a portion of the NE 1/4, NE 1/4, Sec. 27, T. 13 N. R. 19 W. bounded and described as follows:-

Beginning at a point on the Sec. Line, between Secs. 22, and 27, 1327' East of the 1/4 Sec. corner between Secs. 22 and 27, being the NE corner of NW 1/4 NW 1/4 and the NW corner NE 1/4 NE 1/4 said Sec. 27. Thence north 89° 50' E. along the Sec. Line between Secs. 22 and 27, 1082.8 ft. To the right of way of C. M. & S. P. R. Y. Thence South 60° 50' E. 263.3 along Right of Way to an intersection with the Sec. Line between Secs. 26 and 27. Thence N. 82° 31' W. 108.2 ft. Thence N. 66° 44' W. 162.3 ft. Thence S 83° 41' W. 157.5 ft. Thence S. 69° 32' W. 231.2 ft. Thence S. 0° 02' W. 59 ft. Thence S. 66° 46' W. 332 ft. Thence S. 0° 02' E. 75 ft. Thence S. 21° 45' W. 123.7 ft. Thence S. 0° 02' E. 70 ft. Thence S. 89° 52' W. 70 ft. Thence S. 17° 37' W. 948 ft. Thence S. 89° 52' W. 15 ft. Thence S. 12° 52' W. 359.2 ft. Thence South 0° 02' E. 238.0 ft. Thence S. 89° 50' W. 115.7 ft. Thence N. 0° 02' W. 1329.2 ft. to the place of beginning. Courses were deflected from the true Meridian. The land surveyed to be known and designated as Prescotts Addition to the City of Missoula, Montana. and the land included in all streets and alleys, shown on the annexed plat, to be and are hereby granted and dedicated to the use of the Public forever. Dated this \_\_\_\_ day of \_\_\_\_\_ 1908.

Clarence R. Prescott  
Julia M. Prescott

Subscribed and sworn to before me this 6<sup>th</sup> day of March 1909  
Edward E. Multroney  
Notary Public in and for Missoula County - Montana.



State of Montana }  
County of Missoula }

Edwin S. Hathaway being duly sworn, deposes and says that he is the Engineer under whose supervision the survey and plat hereon were made in Missoula County Montana, that the said plat is a correct representation of said survey, the same having being made according to law, and that all distances and dimensions of lots streets and alleys are as shown hereon, surveyed Nov. 1908.

Edwin S. Hathaway

Subscribed and sworn to before me, this 6<sup>th</sup> day of March 1909.  
Edward E. Multroney  
Notary Public in and for Missoula County - Montana.



State of Montana }  
County of Missoula }

I hereby certify that the foregoing Instrument was filed in my office on the \_\_\_\_ day of \_\_\_\_ A.D. 1909 at \_\_\_\_ o'clock \_\_\_\_ M. and is recorded on page \_\_\_\_ of plats of \_\_\_\_ Missoula County Records.

Clerk & Recorder of Missoula County, Montana.

This plat is hereby approved this 8<sup>th</sup> day of March 1909  
P. T. Curran  
Frank Nelson  
Tyler Worden  
County Commissioners of Missoula County Montana

7356  
I certify that I received this Instrument for Record on the 8<sup>th</sup> day of March 1909, at 4:55 o'clock P. M. and that it is recorded in Vol. 2 of Plat Records of Missoula County, State of Montana, on page \_\_\_\_  
Witness my hand and official seal  
E. W. Kuphal  
County Recorder  
By F. L. Smith  
Deputy  
Fees \$ 16.00 Chg.  
Return to C. Prescott

STATE OF MONTANA }  
County of Missoula }  
I, \_\_\_\_\_  
20<sup>th</sup> January 25  
Subscribed and sworn to before me  
\_\_\_\_\_  
Notary Public

7356  
I certify that I received this Instrument for Record on the 8<sup>th</sup> day of March 1909 at 4:55 o'clock P.M. and that it is recorded in Vol 2 of Plat Records of Missoula County State of Montana, on page 3.  
Witness my hand and official seal  
E. W. Kuphal  
County Recorder  
By F. L. Smith  
Deputy  
Fees \$16.00 Chg.  
Return to C. Prescott