

RESOLUTION NO. 2014- 096

**ESTABLISHMENT OF A SCHOOL ZONE AND
SCHOOL ZONE SPEED LIMIT
AT FRENCHTOWN ELEMENTARY SCHOOL
MAIN STREET, FRENCHTOWN, MT**

WHEREAS, the Board of County Commissioners is given authority to control and manage county roads within the county by §7-14-2101 MCA; and

WHEREAS, the Board of County Commissioners is given authority to place traffic control devices on roads under their jurisdiction to regulate traffic by §61-8-206 MCA; and

WHEREAS, §61-8-310 MCA gives the Board of County Commissioners authority to decrease the speed limit in an area near a school and requires that signs be erected designating the school zone speed limit; and

WHEREAS, Public Works Department staff consulted with the Frenchtown School District pursuant to §61-8-310(7) MCA; and

WHEREAS, speed limits cannot be enforced without the installation of proper signage pursuant to §61-8-704 MCA; and

WHEREAS, §61-8-726 MCA doubles the penalty for violating a speed limit in a school zone which has been set pursuant to §61-8-310 MCA.

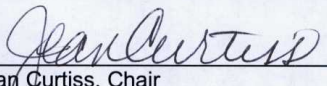
NOW, THEREFORE, BE IT RESOLVED by the Missoula Board of County Commissioners that a school zone be established on Main Street at the Frenchtown Elementary School as shown in Exhibit 1; and


BE IT FURTHER RESOLVED that a 25 Mile Per Hour (MPH) school zone speed limit be established on Main Street at the Frenchtown Elementary School weekdays during the school year from 7:00 AM to 9:00 AM and from 3:00 PM to 5:00 PM; and

BE IT FURTHER RESOLVED that the County Public Works Director place appropriate signs on Main Street, Mullan Road and Ducharme Street indicating the school zone and school zone speed limit.

DATED THIS 13TH DAY OF AUGUST, 2014.

**BOARD OF COUNTY COMMISSIONERS
MISSOULA COUNTY, MONTANA**


Jean Curtiss, Chair


Bill Carey, Commissioner

NOT AVAILABLE FOR SIGNATURE
Michele Landquist, Commissioner

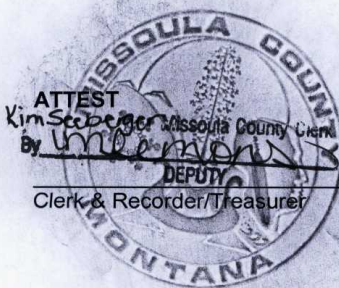
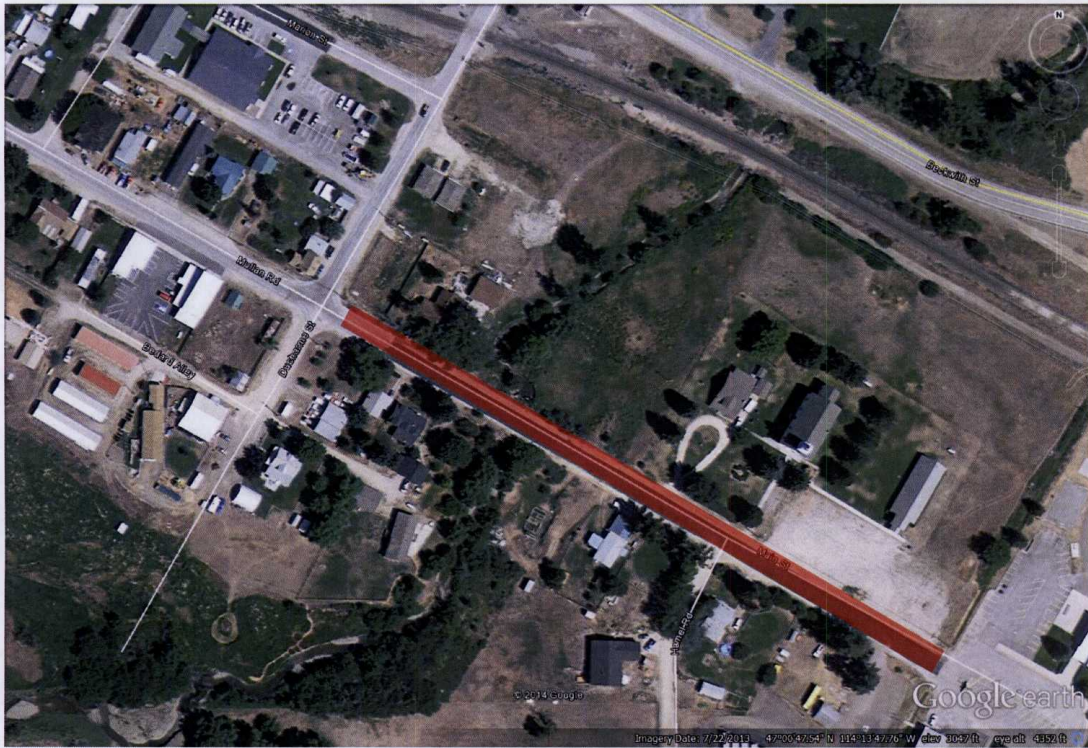


EXHIBIT 1 RESOLUTION No. 2014-096

SCHOOL ZONE FOR FRENCHTOWN ELEMENTARY SCHOOL



NOTE: Red shading delineates extent of the school zone and school zone speed limit